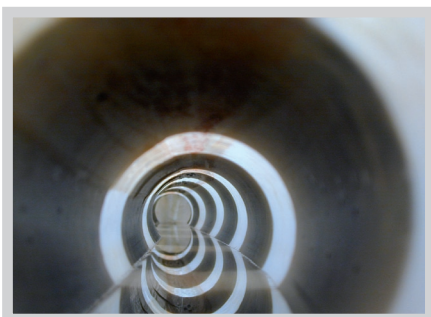
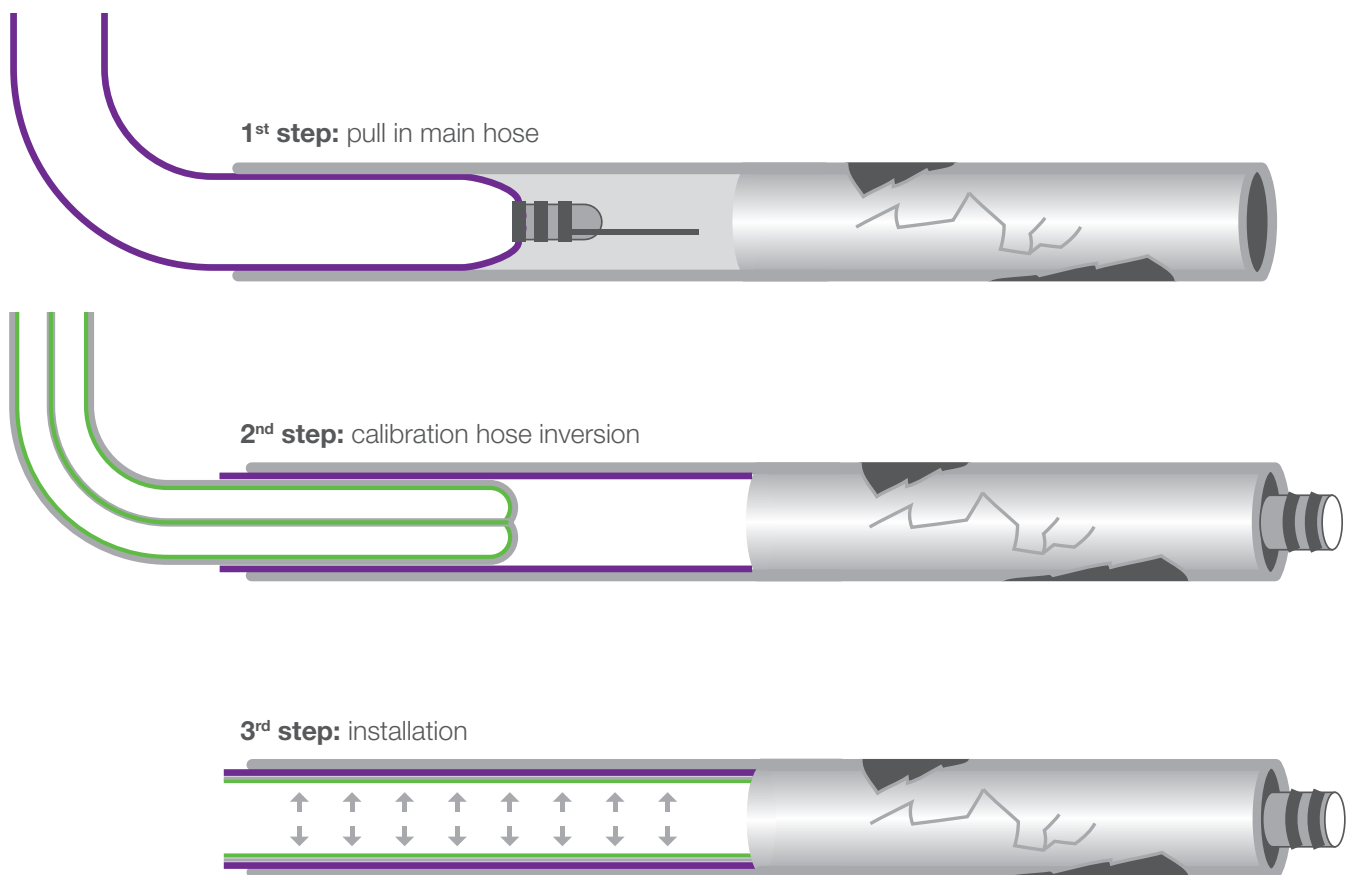


# SOLTA<sup>®</sup> LINER // PULL IN

## Liner for pull in method

SOLTA<sup>®</sup> LINER PULL IN provides a wide variety of solutions for the rehabilitation of gravity and pressure pipes. The perfectly adapted, calibration hose system easily permits curing by any means such as hot water, steam or UV light.

- liner in single- and multi-layer construction
- rehabilitation of gravity and pressure pipes
- adapted to diverse site conditions and curing methods
- suitable for several standard resin treatments (user verification is needed)
- easy impregnation and very convenient installation



### Specifications

diameters	from DN 100 to DN 2000
wall thicknesses	in stepped increments from 3 mm to 70 mm
coating	upon request
curing method	hot water, steam or UV light
liner which deviate from the standard are available upon request	