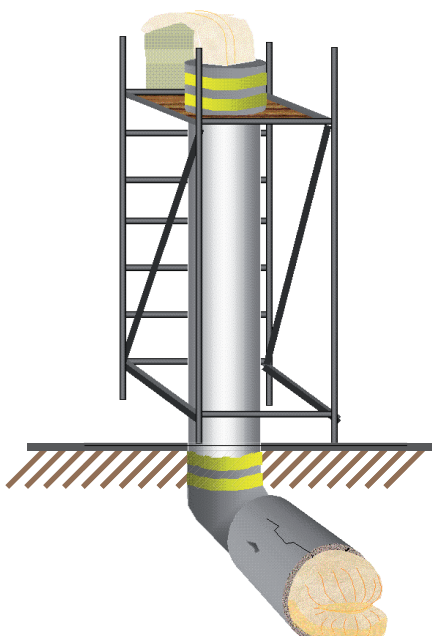
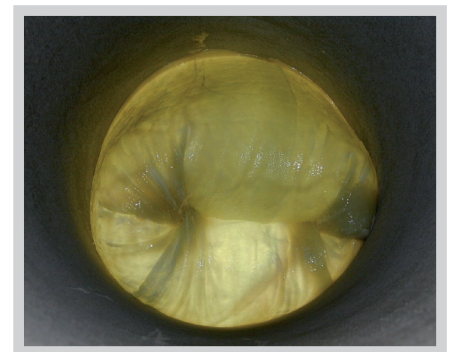


SOLTA[®] LINER // PRESSURE

Liner for rehabilitation of potable-water and waste-water pressure pipes as well as for industrial plant facilities

SOLTA[®] LINER PRESSURE is the solution for the rehabilitation of pressure pipelines. Its special needle felt/composite-fibreglass construction makes for a liner that holds up well to high static loads and withstands high internal pressures.

- liner in multi-layer construction
for inversion and pull-in placement
- liners designed for high internal pressures and static loads
- rehabilitation of sewer-, potable water- and industrial pressure pipelines
- liner with certification for use in potable-water systems and with coatings for special solutions in the industrial sector
- adapted to diverse site conditions and curing methods
- suitable for several standard resins (user verification is needed)
- easy impregnation and very convenient installation



Specifications

diameters	from DN 100 to DN 2000
wall thicknesses	in stepped increments from 4 mm to 30 mm
coating	upon request
process	INVERSION or PULL IN
curing method	hot water, steam or UV light
liners which deviate from the standard are available upon request	

Installation with a water column
and inversion tower